

Comune di **TREVISO**

Provincia di **TREVISO**

Prot. n. <i>40861</i>
09 GIU 2010
Settore Pianificazione Territoriale Urbanistica

Piano di Lottizzazione Residenziale "**CA' ZENOBIO 3**"  
in Zona Territoriale Omogenea di tipo **C2.1/1** – Foglio **4**

PROGETTO ESECUTIVO DELLE OPERE DI URBANIZZAZIONE

ALLEGATO B.06  
**RILIEVO TOPOGRAFICO**



09

40899

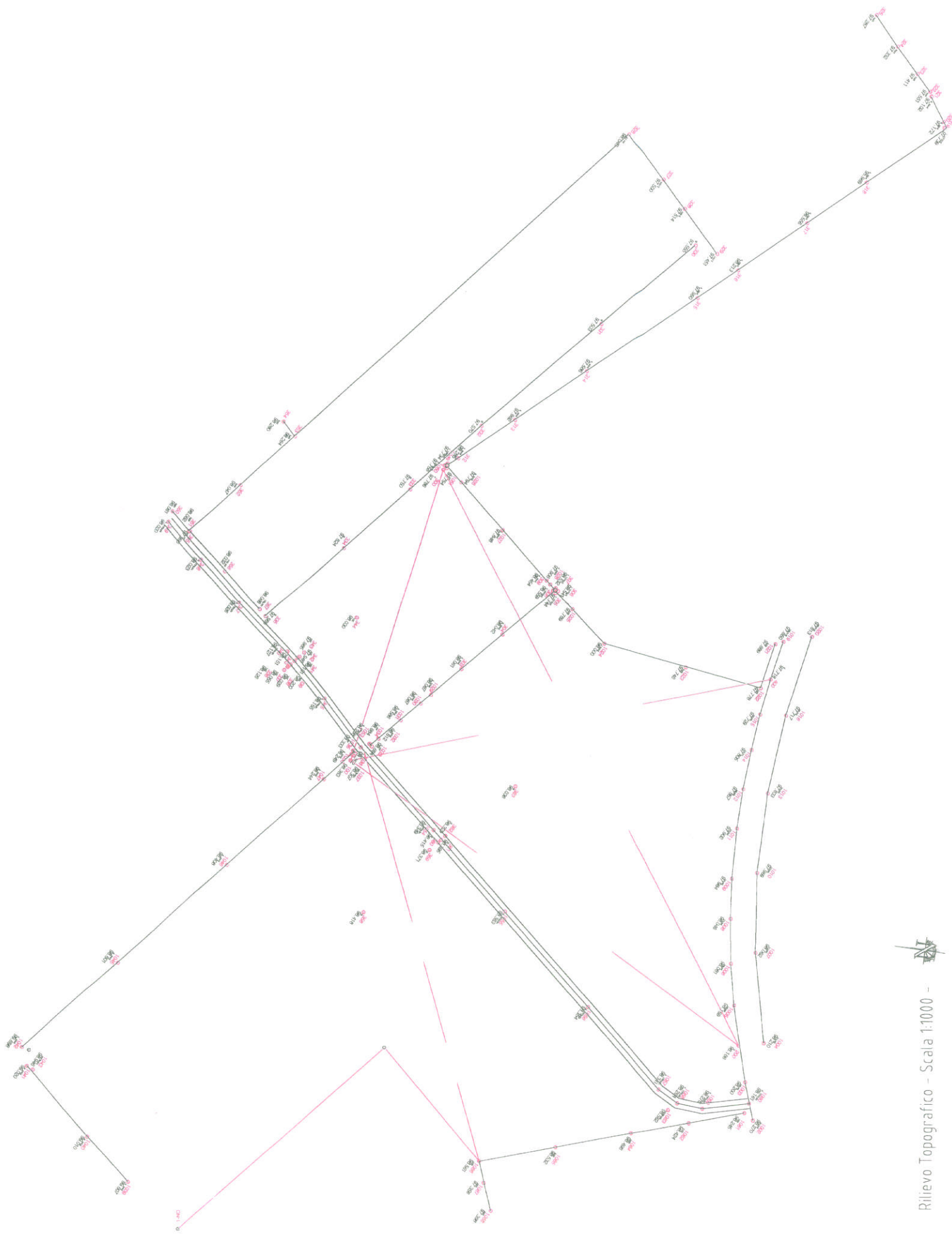
7 GIU 2010

Ponzano Veneto, li **01 GIU. 2010**



0|15012004|2|D5CP|0|0|Durante Leandro|Geometra|TREVISO|  
 9|50|20|10|0|7.52-G|STAZ|  
 6|Corrò Stefania S\_BONA\_\_\_\_14/01/04|  
 1|100||  
 2|200|0.000|143.400|V|-1.814|  
 2|1002|6.145|160.784|MARC|-1.730|  
 2|1003|3.189|151.603|MARC|-1.800|  
 2|1004|397.822|149.172|MARC|-1.790|  
 2|1005|395.860|135.518|MARC|-1.841|  
 2|1006|390.879|128.366|MARC|-1.919|  
 2|1007|387.837|133.540|MARC|-1.938|  
 2|1008|384.700|122.523|MARC|-1.954|  
 2|1009|378.659|118.880|MARC|-2.016|  
 2|1010|376.658|125.772|MARC|-2.031|  
 2|1011|370.606|116.963|MARC|-2.098|  
 2|1012|364.073|117.486|MARC|-2.143|  
 2|1013|364.433|124.996|MARC|-2.167|  
 2|1014|357.765|119.923|MARC|-2.195|  
 2|1015|352.287|123.375|MARC|-2.271|  
 2|1016|352.849|131.064|MARC|-2.283|  
 2|400|347.242|128.123|V|-2.280|  
 2|1019|342.321|134.565|MARAC|-2.350|  
 2|1020|342.680|143.315|MARAC|-2.387|  
 2|1021|342.333|132.040|REC|-2.311|  
 2|1022|348.281|124.675|REC|-2.222|  
 2|1023|342.086|104.048|REC|-2.254|  
 2|1024|332.063|83.915|PICCH|-2.000|  
 2|1025|321.422|80.854|REC|-2.211|  
 2|1026|283.794|90.477|A\_CAN|-2.206|  
 2|1027|296.708|83.451|A\_CAN|-2.152|  
 2|1028|313.441|80.379|A\_CAN|-2.094|  
 2|1029|315.854|31.049|A\_CAN|-1.913|  
 2|1030|316.030|26.979|A\_CAN|-1.913|  
 2|1031|316.506|19.141|A\_CAN|-1.414|  
 2|1032|317.119|10.471|A\_CAN|-1.388|  
 2|1033|321.938|7.532|S\_SIF|-1.306|  
 2|1034|313.384|7.501|S\_SIF|-1.316|  
 2|1035|274.894|2.996|S\_SIF|-1.667|  
 2|1036|296.585|2.513|S\_SIF|-1.648|  
 2|1037|292.608|1.661|METANO|-1.693|  
 2|1038|268.482|1.840|A\_CAN|-1.751|  
 2|1039|90.833|142.977|A\_CAN|-0.393|  
 2|1040|98.576|137.608|A\_CAN|-0.990|  
 2|1041|111.503|133.490|A\_CAN|-0.980|  
 2|1042|113.983|130.863|A\_CAN|-0.294|  
 2|1043|110.567|132.962|METANO|-1.054|  
 2|1045|114.158|92.763|A\_CAN|-1.399|  
 2|1046|114.898|48.444|A\_CAN|-1.592|  
 2|1047|120.618|9.887|A\_CAN|-1.756|  
 2|1048|279.797|94.427|S\_SIF|-2.257|  
 2|1049|279.796|94.424|S\_SIF|-2.257|  
 2|1050|279.352|93.631|S\_SIF|-2.234|  
 2|1051|279.906|92.968|S\_SIF|-2.246|  
 2|300|279.347|92.187|V|-2.214|  
 2|1053|301.027|4.936|A\_STRADA|-1.732|  
 2|1054|4.331|32.320|A\_STRADA|-1.651|  
 2|1055|9.046|64.500|A\_STRADA|-1.637|  
 2|1056|10.990|102.235|A\_STRADA|-1.646|  
 2|1057|11.870|134.202|A\_STRADA|-1.659|  
 2|1058|11.297|140.911|A\_STRADA|-1.736|  
 2|1059|9.418|147.318|A\_STRADA|-1.724|  
 2|1060|4.920|156.590|A\_STRADA|-1.839|  
 2|1061|6.169|157.401|REC|-1.755|  
 2|1062|11.987|147.606|REC|-1.576|  
 2|1063|12.823|140.582|METANO|-1.438|  
 2|1064|18.746|139.056|REC|-1.502|  
 2|1065|28.760|130.587|REC|-1.468|  
 2|1066|40.066|125.642|REC|-1.439|  
 2|1067|40.403|132.267|REC|-2.644|

2	1068	40.681	140.825	REC	-2.602
1	300				
2	200	0.000	193.615	V	-1.305
2	100	49.539	92.185	V	-1.128
2	303	24.406	60.566	A_CAN	-1.430
2	304	8.289	52.844	A_CAN	-1.449
2	305	382.986	49.993	S_SIFONE	-1.747
2	306	381.675	50.057	S_SIFONE	-0.950
2	307	381.596	49.019	S_SIFONE	-0.959
2	308	382.929	48.973	S_SIFONE	-0.932
2	309	382.091	45.421	S_SIFONE	-1.037
2	1050	252.213	1.440	S_SIFONE	-1.735
2	1049	269.329	2.353	S_SIFONE	-1.757
2	312	288.690	5.828	A_CAN	-1.206
2	313	291.221	26.435	A_CAN	-1.829
2	314	291.589	52.435	A_CAN	-1.905
2	315	291.755	91.781	A_CAN	-1.501
2	316	291.775	106.567	A_CAN	-1.278
2	317	291.796	131.683	A_CAN	-2.935
2	318	291.818	153.412	A_CAN	-3.522
2	319	291.654	181.770	S_SIFONE	-1.752
2	320	291.126	182.691	A_CAN	-2.319
2	321	288.244	184.110	A_CAN	-2.389
2	322	287.767	184.748	REC	-1.940
2	323	285.580	185.109	REC	-2.080
2	324	282.186	186.086	REC	-2.159
2	325	278.417	188.248	REC	-2.204
2	326	262.384	115.106	CIPPO	-1.443
2	327	271.085	109.204	SIEPE	-1.991
2	328	277.237	106.515	SIEPE	-1.977
2	329	287.128	104.370	SIEPE	-2.040
2	330	283.393	101.073	Q	-1.936
2	331	282.530	64.748	Q	-1.988
2	332	275.669	17.736	Q	-1.921
2	333	95.967	11.574	Q	-1.741
2	334	87.431	38.046	Q	-1.667
2	335	85.681	69.351	Q	-1.505
2	336	72.428	77.331	SEZ	-1.365
2	337	72.237	75.955	SEZ	-1.436
2	338	72.137	75.349	SEZ	-1.462
2	339	72.071	74.820	SEZ	-1.291
2	340	71.822	73.293	SEZ	-1.340
2	341	71.647	72.001	SEZ	-1.390
2	342	71.534	71.334	SEZ	-1.545
2	343	71.183	69.539	SEZ	-1.506
2	344	63.474	51.801	SEZ	-1.461
2	345	60.322	78.037	A_STRADA	-1.336
2	346	74.833	72.436	A_STRADA	-1.364
2	347	92.829	73.131	A_STRADA	-1.465
2	348	107.234	77.650	A_STRADA	-1.468
2	349	117.866	83.984	A_STRADA	-1.471
2	350	120.086	82.122	A_STRADA	-1.430
2	351	114.761	78.390	REC	-1.429
2	352	125.027	60.877	REC	-1.444
2	353	144.094	45.313	REC	-1.227
2	354	148.617	49.678	REC	-1.211
2	355	114.538	78.147	GELSO	-1.495
2	356	102.221	72.465	GELSO	-1.459
2	357	88.147	69.285	GELSO	-1.425
2	358	41.366	135.397	Q	-1.073
2	359	32.423	114.688	Q	-1.120
2	360	31.014	112.389	Q	-1.076
2	361	30.508	111.497	Q	-1.096
2	362	29.784	110.376	Q	-1.162
2	363	15.898	97.834	Q	-1.455



Rilievo Topografico - Scala 1:1000 -